



Board Binder Open Session

January 9, 2023

Agenda



**MIDLAND DEVELOPMENT CORPORATION AS AUTHORIZED BY CHAPTER 504 OF THE TEXAS
LOCAL GOVERNMENT CODE**

NOTICE OF PUBLIC MEETING

In accordance with Chapter 551, Texas Government Code, as amended, notice is hereby given to the public that the Board of Directors of the Midland Development Corporation will meet in regular session, open to the public, in the Midland Chamber of Commerce board room, 303 West Wall Street, Suite 200, Midland, Texas, at 2:00 p.m. on January 9, 2023. A quorum of the Board of Directors of the Midland Development Corporation intends to be physically present at the aforementioned location.

Videoconference Information

Join Zoom Webinar

<https://us02web.zoom.us/j/83843461375?pwd=VUNoQ0lnV0pETzUzUERqVlByb2tKZz09>

Passcode: 092676

Or join by phone:

Dial(for higher quality, dial a number based on your current location):

US: +1 346 248 7799 or +1 669 444 9171 or +1 669 900 9128 or +1 719 359 4580 or +1 253 215 8782 or +1 507 473 4847 or +1 564 217 2000 or +1 646 558 8656 or +1 646 931 3860 or +1 689 278 1000 or +1 301 715 8592 or +1 309 205 3325 or +1 312 626 6799 or +1 360 209 5623 or +1 386 347 5053

Webinar ID: 838 4346 1375

Passcode: 092676

International numbers available: <https://us02web.zoom.us/j/83843461375?pwd=VUNoQ0lnV0pETzUzUERqVlByb2tKZz09>

At such meeting, the Board of Directors may discuss, consider, and take action on any of the following items:

1. Call meeting to order.
2. Presentation thanking outgoing Midland Development Corporation Chairman Stephen Lowery.
3. Motion electing officers to serve through December 2023.
4. Motion approving the minutes of the December 12, 2022, meeting of the Midland Development Corporation.
5. Resolution establishing the dates of the regular meetings of the Midland Development Corporation Board of Directors to be held during the period of February 2023 to January 2024.
6. Presentation on the December 2022 monthly expenses and economic development activity report from the Midland Development Corporation Executive Director and staff.

7. Pursuant to Texas Government Code §551.101, the Board of Directors will hold an Executive Session, which is closed to the public to discuss the following matters as permitted under the following Texas Government Code Sections:
 - a. Section 551.087 Deliberation Regarding Economic Development Negotiations
 - i. Discuss business prospects that the Midland Development Corporation seeks to have, locate, stay, or expand in or near the City of Midland, Texas, and discuss possible incentives, and discuss contract compliance on the part of businesses.

Posted this 6th day of January 2023.

Amy M. Turner
City Secretary

Slate of Officers Election

Board Member	Appointment Date	Term Expires	Eligibility Expires
Stephen Lowery	July 2015	January 14, 2023	January 14, 2023
Chase Gardaphe	January 2019	January 14, 2025	January 14, 2025
Berry Simpson	January 2019	January 14, 2025	January 14, 2025
Jill Pennington	April 2020	January 14, 2023	January 14, 2026
P. Lourcey Sams	April 2020	January 14, 2023	January 14, 2026
Brad Bullock	April 2021	January 14, 2024	January 14, 2027
Lucy Sisniega	February 2022	January 14, 2025	January 14, 2028

December 12th Minutes

MIDLAND DEVELOPMENT CORPORATION

MINUTES

December 12, 2022

The Board of Directors of the Midland Development Corporation convened in a special session at the Midland Development Corporation board room, 200 North Loraine Street, Suite 610, Midland, Texas, at 10:00 a.m. on December 12, 2022.

Board Members present: Chairman Stephen Lowery, Director Berry Simpson, Director Lourcey Sams, Director Lucy Sisniega, Director Jill Pennington, Director Brad Bullock and Director Chase Gardaphe

Board Members absent: None

Staff Members present: Assistant City Manager Tina Jauz, City Attorney Nicholas Toulet-Crump, and Deputy City Secretary Vanessa White

Council Member(s) present: Council Member Dan Corrales

MDC Staff Members present: Executive Director Sara Harris, Business Retention & Expansion Coordinator Sammi Steele, and Marketing & Administrative Coordinator Gabrielle Franks

1. Call meeting to order.

Chairman Lowery called the meeting to order at 10:01 am

2. Motion approving the minutes of the November 7, 2022, meeting of the Midland Development Corporation.

Director Pennington moved to approve the minutes of the November 07, 2022 meeting of the Midland Development Corporation; seconded by Director Gardaphe. The motion carried by the following vote: AYE: Lowery, Sams, Sisniega, Bullock, and Simpson. NAY: None. ABSTAIN: None. ABSENT: None.

3. Motion approving the minutes of the November 16, 2022, meeting of the Midland Development Corporation.

Director Sisniega moved to approve the minutes of the November 16, 2022 meeting of the Midland Development Corporation; seconded by Director Simpson. The motion carried by the following vote: AYE: Lowery, Sams, Pennington, Bullock, and Gardaphe. NAY: None. ABSTAIN: None. ABSENT: None.

4. Motion authorizing the execution of a letter of intent between the City of Midland, the Midland Development Corporation, and Hodges Development Services, LP, for the development of a 17.2-acre tract of land located in the southeast quarter of Section 35, Block 40, T-1-S, T&P RR Co. Survey, Midland County, Texas.

Director Simpson moved to approve motion authorizing the execution of a letter of intent between the City of Midland, the Midland Development Corporation, and Hodges Development Services, LP, for the development of a 17.2-acre tract of land located in the southeast quarter of Section 35, Block 40, T-1-S, T&P RR Co. Survey, Midland County, Texas; seconded by Director Gardaphe. The motion carried by the following vote: AYE: Lowery, Sams, Bullock, and Pennington. NAY: None. ABSTAIN: Sisniega. ABSENT: None.

5. Presentation on the November 2022 monthly expenses and economic development activity report from the Midland Development Corporation Executive Director and staff.

Sara Harris gave an overview of the month's expenses, noting that there was a \$1 million dollar disbursement to Texas Tech University Health Sciences Center Child and Adolescent Psychiatry Fellowship Program.

Board recessed into executive session at 10:13 a.m.

6. Pursuant to Texas Government Code §551.101, the Board of Directors will hold an Executive Session, which is closed to the public to discuss the following matters as permitted under the following Texas Government Code Sections:
 - a. Section 551.087 Deliberation Regarding Economic Development Negotiations
 - i. Discuss business prospects that the Midland Development Corporation seeks to have, locate, stay, or expand in or near the City of Midland, Texas, and discuss possible incentives, and discuss contract compliance on the part of businesses.

Board reconvened into open session at 11:07 a.m.

All the business at hand having been completed, Chairman Lowery adjourned the meeting at 11:07 a.m.

Respectfully submitted,

Vanessa White, Deputy City Secretary

PASSED AND APPROVED the 9th Day of January 2023.

Jill Pennington, Secretary

2023 Meeting Dates

RESOLUTION NO. _____

**RESOLUTION ESTABLISHING THE DATES OF THE
REGULAR MEETINGS OF THE MIDLAND
DEVELOPMENT CORPORATION BOARD OF
DIRECTORS TO BE HELD DURING THE PERIOD OF
FEBRUARY 2023 TO JANUARY 2024**

WHEREAS, the Midland Development Corporation Board of Directors finds it to be in the public interest to establish the dates on which the Board of Directors will meet in regular session during the period of February 2023 to January 2024;

NOW, THEREFORE, BE IT RESOLVED BY THE BOARD OF DIRECTORS OF THE MIDLAND DEVELOPMENT CORPORATION:

SECTION ONE. That the dates for the regular meetings of the Midland Development Corporation Board of Directors to be held during the period of February 2023 to January 2024, as shown on Exhibit A attached hereto and incorporated herein for all purposes, are hereby adopted.

SECTION TWO. That the Chairman of the Midland Development Corporation is hereby authorized to cancel a regular meeting of the Midland Development Corporation Board of Directors. Midland Development Corporation staff shall post notice of any such cancellation on the Midland Development Corporation's website and the City Secretary shall post notice of any such cancellation in the same manner that Midland Development Corporation agendas are posted.

On motion of Director _____, seconded by Director _____, the above and foregoing resolution was adopted by the Board of Directors of the Midland Development Corporation at a regular meeting on the _____ day of _____, AD, 2023, by the following vote:

Directors voting "AYE":

Directors voting "NAY":

STEPHEN LOWERY,
Chairman of the Midland
Development Corporation

ATTEST:

JILL PENNINGTON,
Secretary of the Midland
Development Corporation

APPROVED AS TO FORM ONLY:

JOHN OHNEMILLER,
Attorney for the Midland
Development Corporation

**Midland Development Corporation
Board of Directors**

Meeting Dates for 2023 – First Monday of the Month

10:00 a.m.

Monday, February 6, 2023 – 10 a.m.

Monday, March 6, 2023 – 10 a.m.

Monday, April 3, 2022 – 10 a.m.

Monday, May 1, 2023 – 10 a.m.

Monday, June 5, 2023 – 10 a.m.

Monday, July 10, 2023 – 10 a.m.

Monday, August 7, 2023 – 10 a.m.

Monday, September 11, 2023 – 10 a.m.

Monday, October 2, 2023 – 10 a.m.

Monday, November 6, 2023 – 10 a.m.

Monday, December 4, 2023 – 10 a.m.

Monday, January 8, 2024 – 10 a.m.

Exhibit A

Income Statement

MIDLAND DEVELOPMENT CORPORATION
INCOME STATEMENT FOR THE 3 MONTHS ENDED
December 31, 2022

	Dec-22	YTD	Budgeted Amount
Revenue	\$1,512,310.58	\$1,772,139.99	\$11,976,644.00
40100 - State Sales Tax	\$1,380,834.52	\$1,380,834.52	\$11,000,000.00
40600 - Public ROW Use Fees	\$0.00	\$0.00	\$0.00
43000 - Interest	\$18,000.00	\$88,200.00	\$0.00
43010 - Interest - Nonpooled Invest	\$32,089.06	\$58,944.47	\$0.00
46190 - Miscellaneous Rentals	\$81,387.00	\$244,161.00	\$976,644.00
4235150 - Midland Dvlpmt Corp Revenue	\$1,512,310.58	\$1,772,139.99	\$11,976,644.00

Expense	\$547,899.84	\$3,545,209.94	\$22,392,778.00
51010 - Base Salary	\$27,654.49	\$76,030.41	\$350,096.00
51090 - Fica MDC Portion	\$969.31	\$3,557.82	\$28,234.00
51110 - Health Insurance	\$2,406.60	\$3,645.12	\$28,080.00
51135 - ACCE Profit Sharing	\$1,849.16	\$4,593.98	\$24,507.00
52010 - Office Supplies	\$188.39	\$1,824.49	\$6,000.00
52110 - Motor Vehicle Supplies	\$90.19	\$90.19	\$1,500.00
52115 - Minor Furniture & Fixtures	\$0.00	\$0.00	\$1,000.00
52155 - Minor Computer Hrdwre & Periph	\$0.00	\$891.36	\$5,000.00
52160 - Computer Software & Supplies	\$6,523.92	\$24,027.11	\$30,000.00
52620 - Postage	\$0.00	\$130.00	\$300.00
53010 - Communication	\$1,316.07	\$3,958.94	\$17,000.00
53030 - Light & Power	\$18.06	\$27.05	\$150.00
53110 - Insurance-External	\$0.00	\$0.00	\$150,000.00
53212 - Equipment Rental-External	\$345.34	\$1,068.34	\$5,000.00
53220 - Advertising	\$13,275.30	\$75,251.50	\$200,000.00
53370 - Grounds Maintenance	\$9,421.84	\$12,374.08	\$22,000.00
53405 - Software Maintenance	\$1,329.22	\$3,987.66	\$12,000.00
53440 - External Audit Fees	\$0.00	\$4,347.00	\$35,000.00
53450 - Consulting Fees	\$0.00	\$25,068.30	\$500,000.00
53510 - Travel & Entertainment	\$95.44	\$197.81	\$8,000.00
53520 - Dues & Subscriptions	\$243.36	\$1,654.57	\$15,000.00
53530 - Training,Registration Fees,Etc	\$0.00	\$606.29	\$10,000.00
53905 - Economic Development Incentive	\$0.00	\$0.00	\$5,129,123.00
53907 - Business Recruitment & Retentn	\$2,095.56	\$13,919.75	\$50,000.00
53909 - Prior Year Committed Incentives	\$2,112.00	\$1,402,638.55	\$9,999,673.00
53920 - Rent	\$5,678.50	\$17,035.50	\$68,142.00
54010 - Building Maintenance	\$13,849.00	\$34,566.80	\$80,000.00
55120 - Maint. - Instruments & Appara.	\$83.83	\$161.59	\$1,000.00
56188 - MOTRAN	\$71,250.00	\$71,250.00	\$142,500.00
56202 - General Fund Services	\$31,651.08	\$127,510.32	\$379,813.00
56410 - Payment of Principal	\$0.00	\$0.00	\$70,605.00
56420 - Interest Expense	\$0.00	\$0.00	\$6,595.00
56910 - Depreciation Expense	\$0.00	\$0.00	\$416,460.00
56995 - Project Non Capital - Promotions	\$74,798.67	\$112,496.40	\$1,100,000.00
57000 - Capital Land Purchases	\$0.00	\$0.00	\$0.00
57001 - Capital Buildings & Structures	\$280,654.51	\$548,238.02	\$3,500,000.00
57070 - Construction in Process	\$0.00	\$974,060.99	\$0.00
235235 - Midland Development Corp	\$547,899.84	\$3,545,209.94	\$22,392,778.00

December 2022 Net Income: \$964,410.74

Year-to-Date Net Income: (\$1,773,069.95)

Balance Sheet

MIDLAND DEVELOPMENT CORPORATION
BALANCE SHEET FOR THE PERIOD ENDED
December 31, 2022
(Used for Internal Purposes Only)

ASSETS

Current Assets

Cash and cash equivalents	16,614,630	
Investments	7,704,935	
Sales tax receivable	-	
Prepaid expenses	58,667	
Accounts receivable	74,936	
	24,453,168	

Non-Current Assets

Capital Assets, net	27,618,140	
Forgivable Loans		
Made to Primary Government	-	
Made to Other	6,579	
Total Forgivable Loans	6,579	
	27,624,719	

Total Assets \$ 52,077,887

LIABILITIES AND NET POSITION

Liabilities

Accounts payable	-	
Retainage Payable	20,542	
Capital Leases payable	93,357	
Commitments payable		
Due within one year	8,866,642	
Due in more than one year	7,376,259	
Total Commitments Payable	16,242,901	
	16,356,800	

Net Position

Net investment in capital assets	27,618,140	
Restricted for Forgivable Loans	6,579	
Restricted for Capital Leases	93,357	
Promotions	1,019,925	
Unrestricted	6,983,085	
	35,721,086	

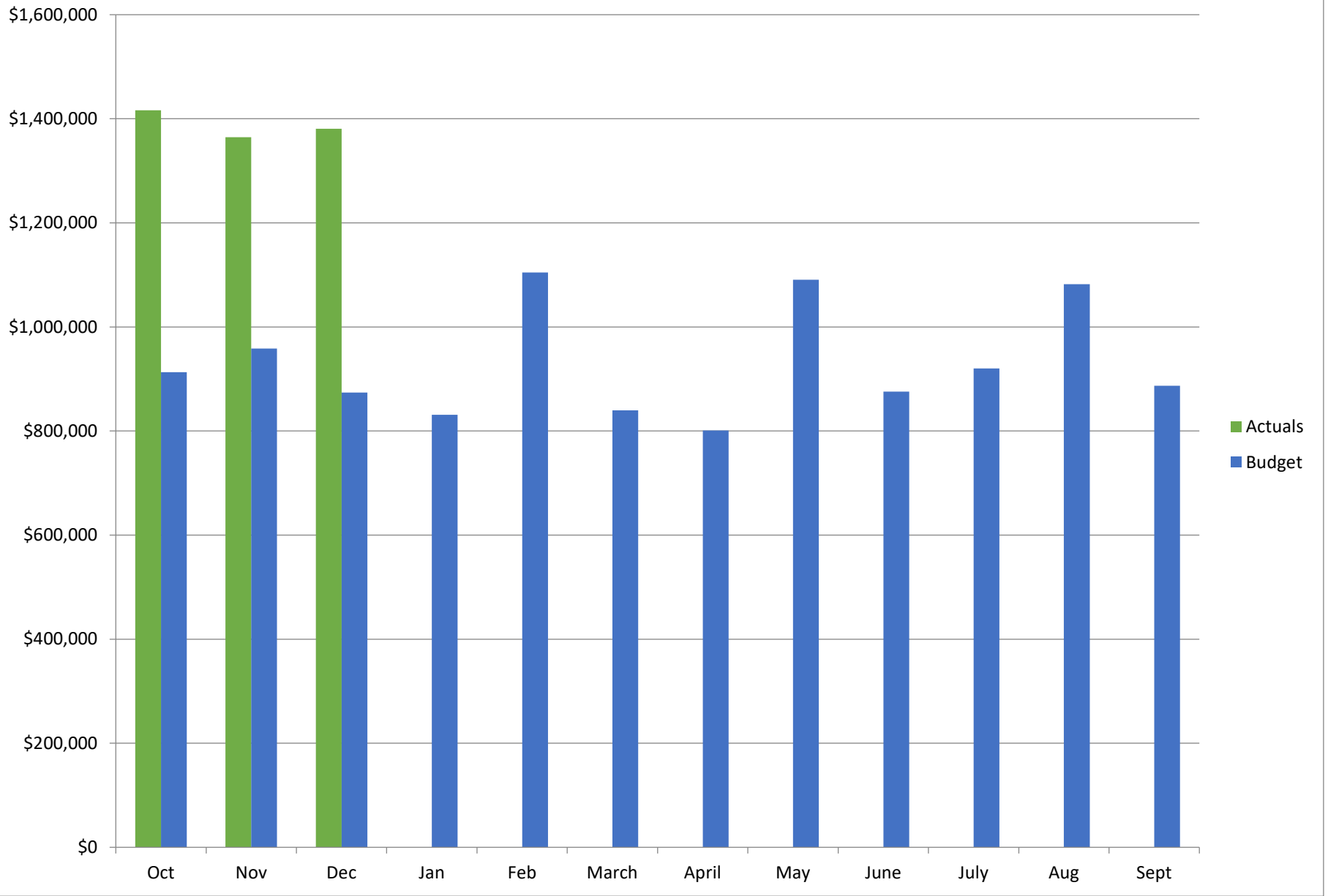
Total Liabilities and Net Position \$ 52,077,887

Sales Tax

Sales Tax Variance

	2020-2021	2021-2022	% Change	2021-2022	2022-2023	% Change	YTD Change
October	\$1,203,058.10	\$971,343.63	-19.26%	\$971,343.63	\$1,416,510.48	45.83%	45.83%
November	\$983,259.60	\$1,156,353.89	17.60%	\$1,156,353.89	\$1,364,595.51	18.01%	30.71%
December	\$843,087.27	\$1,013,549.80	20.22%	\$1,013,549.80	\$1,380,834.52	36.24%	32.49%
January	\$752,584.05	\$1,117,874.02	48.54%	\$1,117,874.02			
February	\$1,224,314.99	\$1,434,528.04	17.17%	\$1,434,528.04			
March	\$783,914.25	\$983,421.74	25.45%	\$983,421.74			
April	\$687,198.37	\$1,015,116.31	47.72%	\$1,015,116.31			
May	\$1,198,336.79	\$1,487,467.44	24.13%	\$1,487,467.44			
June	\$927,060.71	\$1,218,236.38	31.41%	\$1,218,236.38			
July	\$909,387.44	\$1,326,275.50	45.84%	\$1,326,275.50			
August	\$1,176,070.55	\$1,582,536.23	34.56%	\$1,582,536.23			
September	\$978,956.15	\$1,303,011.95	33.10%	\$1,303,011.95			
Annual Total	\$11,667,228.27	\$14,609,714.93	25.22%	\$14,609,714.93	\$4,161,940.51		

Sales Tax Actuals vs Budget Estimates



Activity Report

January 9, 2023

2022 MARKETING REPORT

Social

ooo

Materials



Ads



Feedback

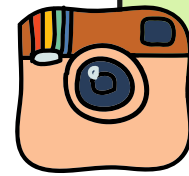
S O C I A L M E D I A

FACEBOOK



- 1,903 Followers (+17.76%)
- 70.01K Impressions
- 129.55 in Engagement
- Top post: Meet the Board post

INSTAGRAM



- 1,686 Followers
- 37.53K Impressions
- 61.23 in Engagement
- Top post: Firehawk ground breaking photo

LINKEDIN



- 1,457 Followers (7.61%)
- 28.11K Impressions
- 107.45 in Engagement
- Top post: September and October BRE recap

@midlandxedc



TIKTOK

- 60 total followers in 2022
- 2 videos
- 3,712 views
- First video: 3,417 views, 78 likes, 6 comments, and 9 shares

PLAY



Romanticizing
Downtown Midland

TikTok
@midlandtxedc



FACEBOOK AD PERFORMANCE

1

ANYTHING CAN BE BOOSTED

Facebook allows you to choose a budget to "boost" a post that aligns with a goal of your choosing.

2

WE CAN RUN ADS SEPERATE FROM OUR POSTS

We can upload our own creative for the ads and allow Facebook to serve the different options to different audiences.

- Website Visits
- Follower Growth
- More Messages

3

RFP AD

We boosted the RFP post that was posted already. We targeted the Houston and Midland area with the goals of link clicks.



LOOPNET

- 37,616 Views
- 9,902 Unique Prospects
- 772 Detailed Page clicks
- 3.8 Frequency

FACEBOOK

- Ad 1: 3576 reach with 59 link clicks
- Ad 2: 2660 reach with 99 link clicks

HS AT WORKSHOP



FIREHAWK GROUND BREAKING



FOR 2023 ...

COPYWRITING



Taking over long form content on MDC's website

EVENTS



TEDC Training, High Ground Site Selector Event, 1MC/Entrepreneur Group

MORE TIKTOK



Goal: grow on TikTok and finish Part 107 License training

ADVERTISING



Exploring other platforms for specific projects



BUSINESS
RETENTION &
EXPANSION

2022 ANNUAL REPORT



BRE COORDINATOR: SAMMI STEELE

SINCE MARCH 2022

900



BUSINESS VISITS

WHAT'S THE PURPOSE OF A BRE VISIT?

Establish a relationship with the company



Make them feel heard and cared for by the MDC & City of Midland



Ask them questions about operations and collect data on trends & feedback



Provide actionable data to the MDC board

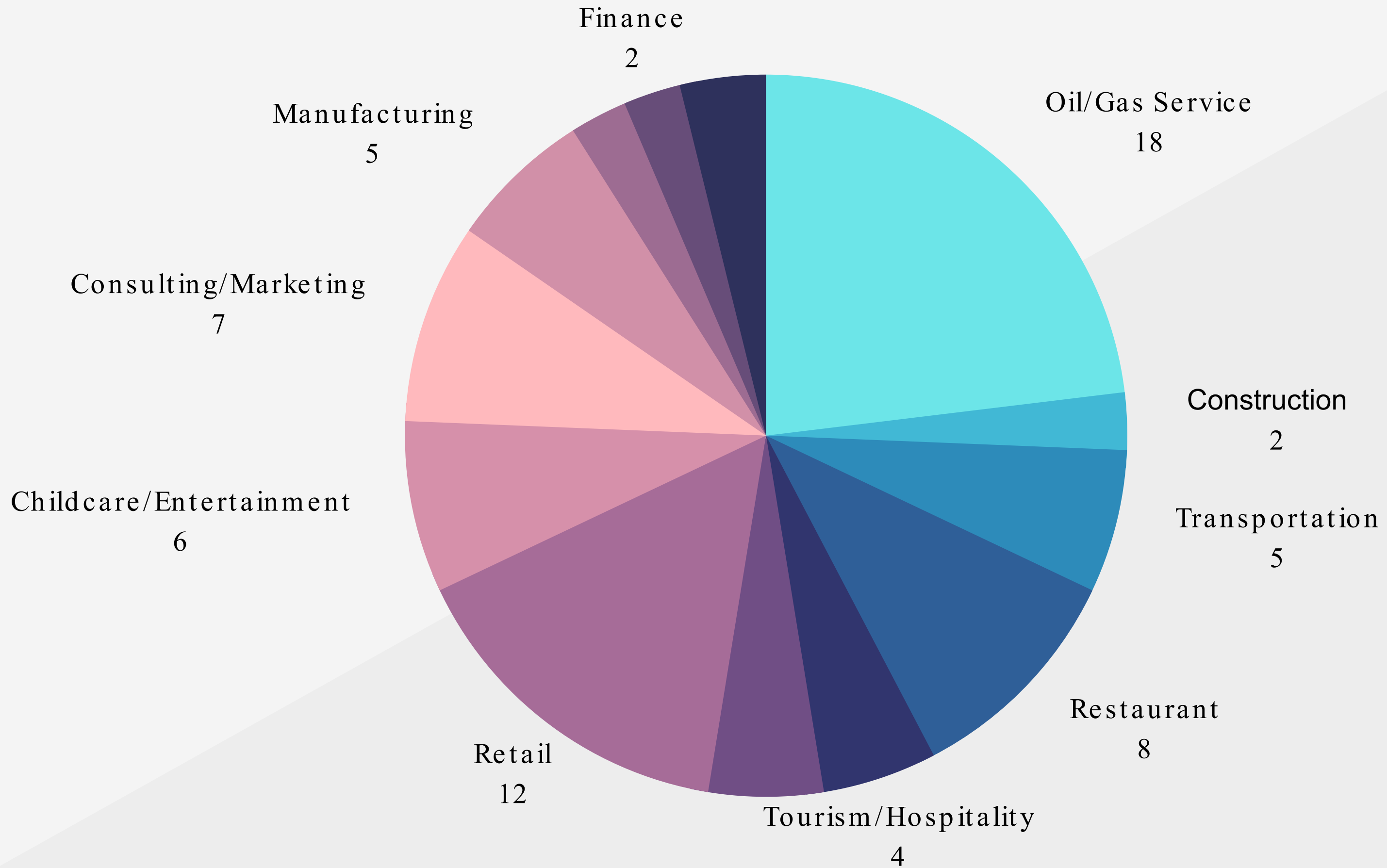


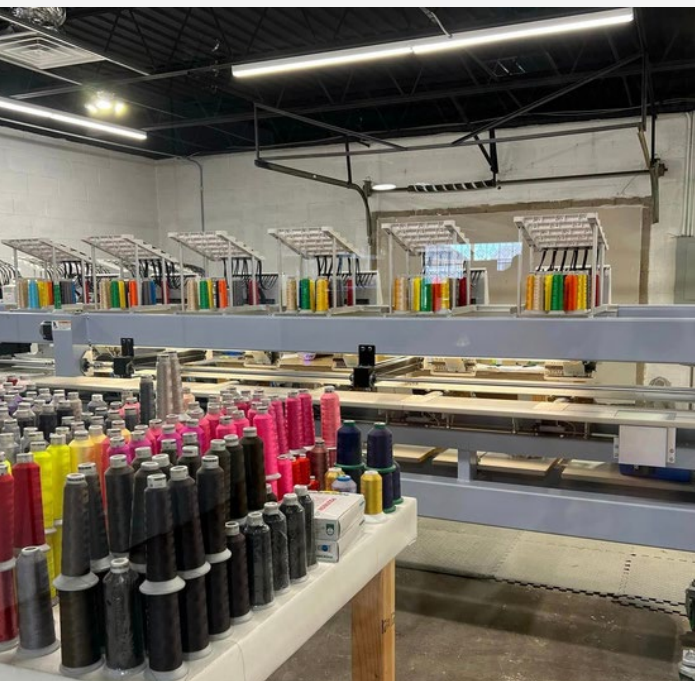


WHO DID WE VISIT?

- Focused on locally owned and operated
- Emphasized meeting in person at the businesses' office or workshop
- Utilized my verified Facebook page with 12,000 followers to share about the visit if the company was comfortable









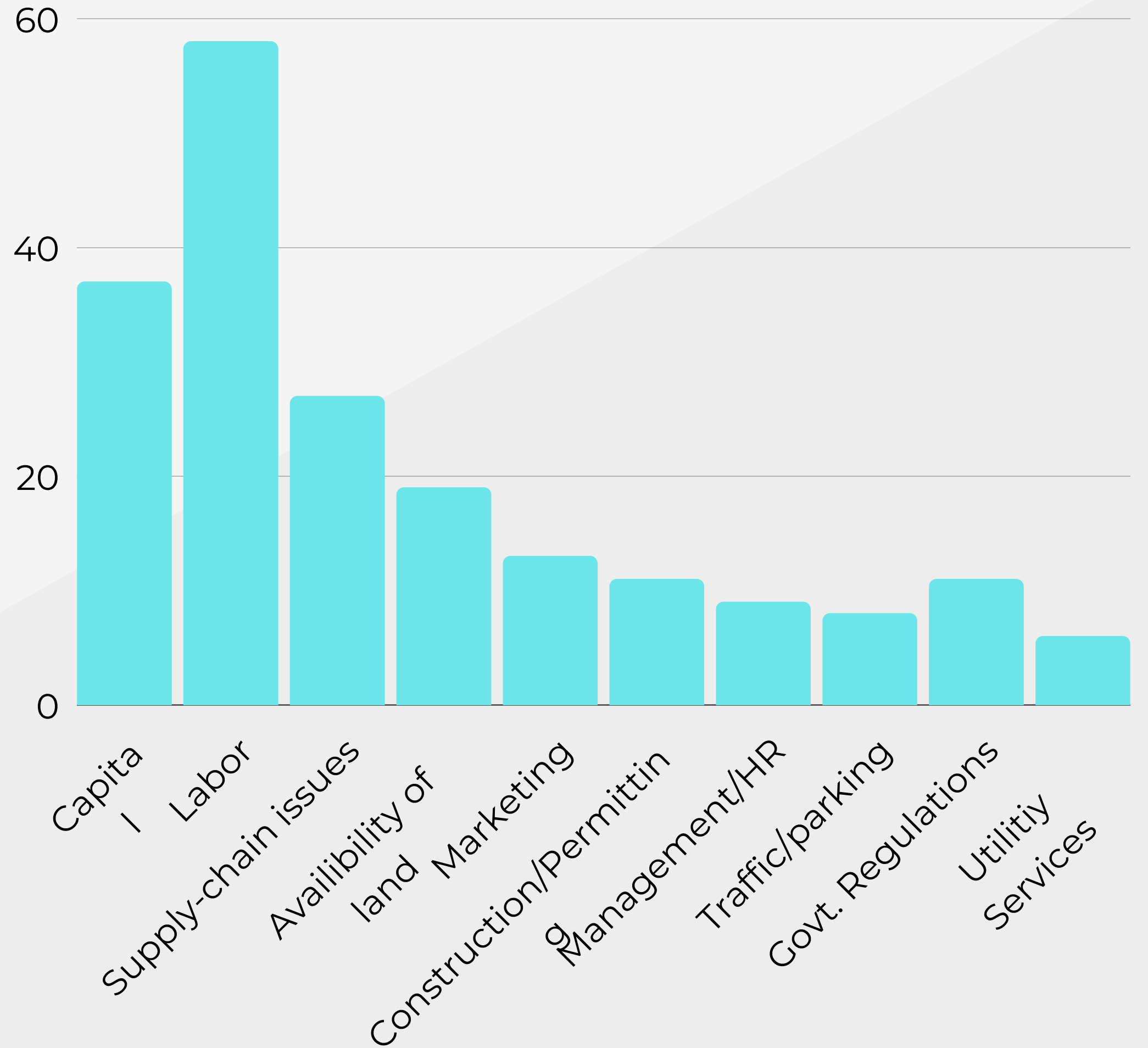
88%

LOOKING TO
EXPAND OR
GROW MORE
THAN 15% IN THE
NEXT 3 YEARS





WHAT FACTORS ARE IMPACTING BUSINESSES?



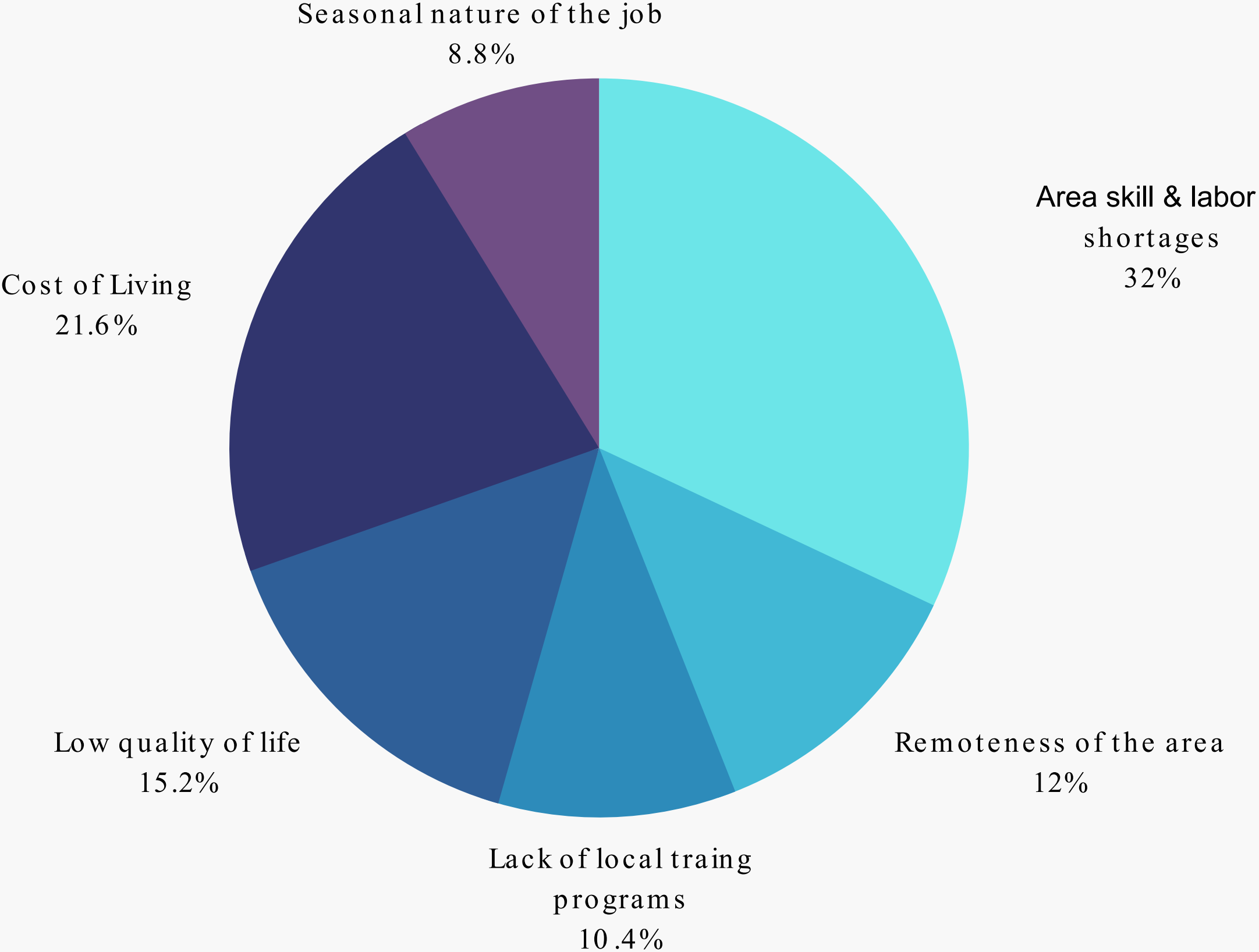


LABOR
WAS THE
LARGEST
ISSUE FOR

64%

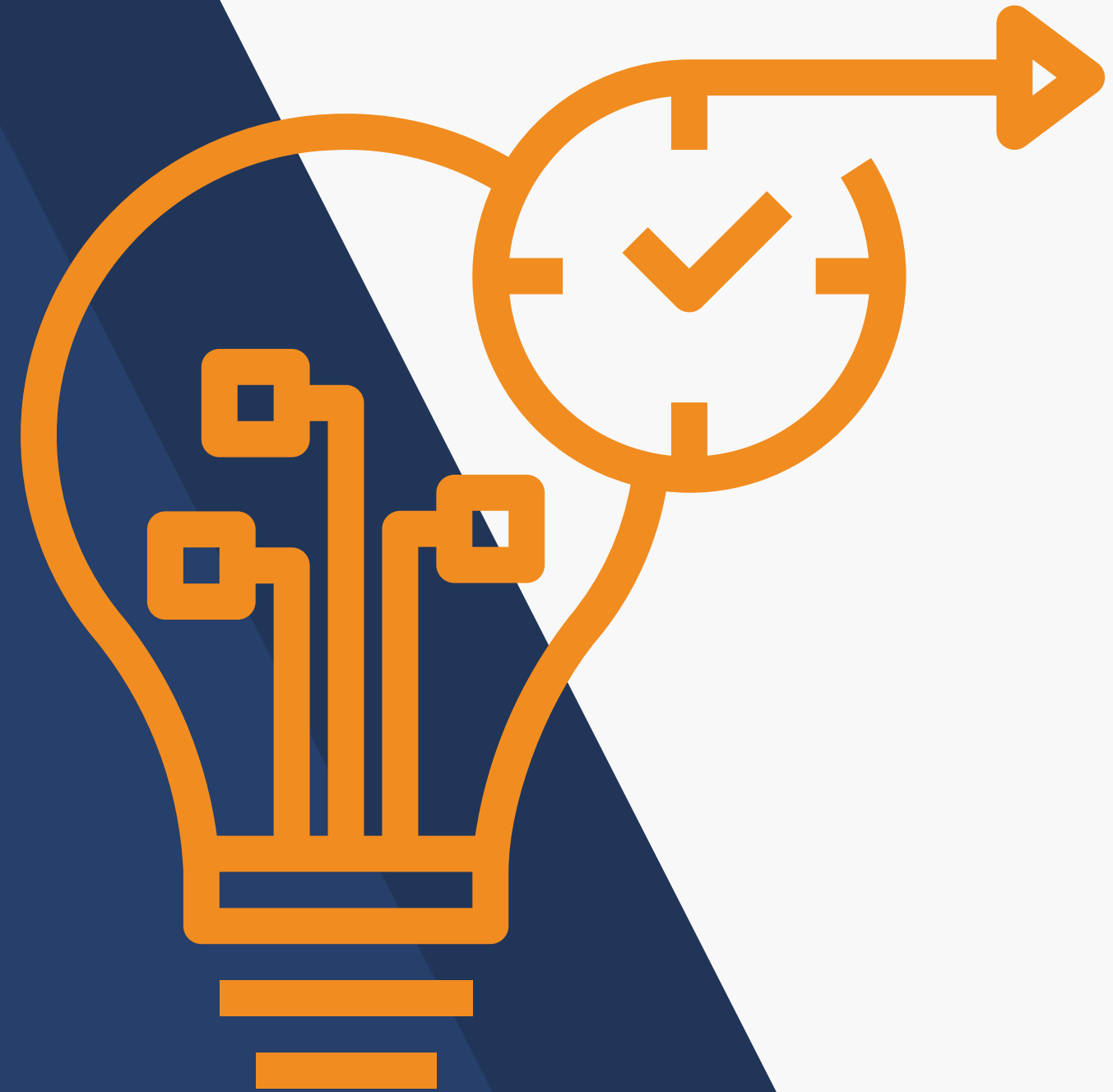


WHAT MAKES IT HARD TO RETAIN & RECRUIT EMPLOYEES?





LOOKING AHEAD





PROVIDE LOCAL
WORKFORCE TRAINING

START 1 MILLION CUPS
CHAPTER

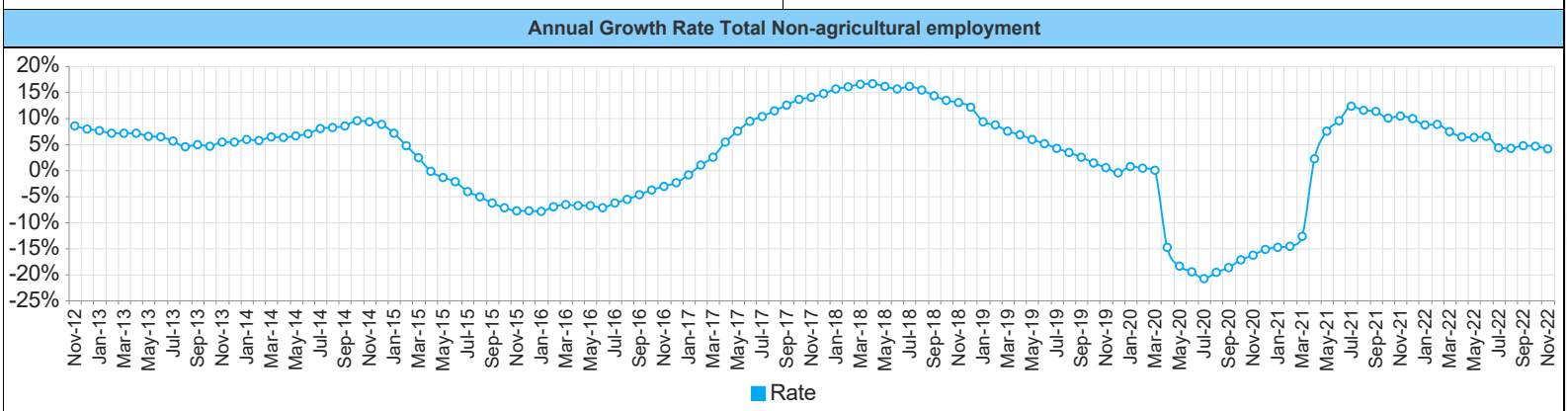
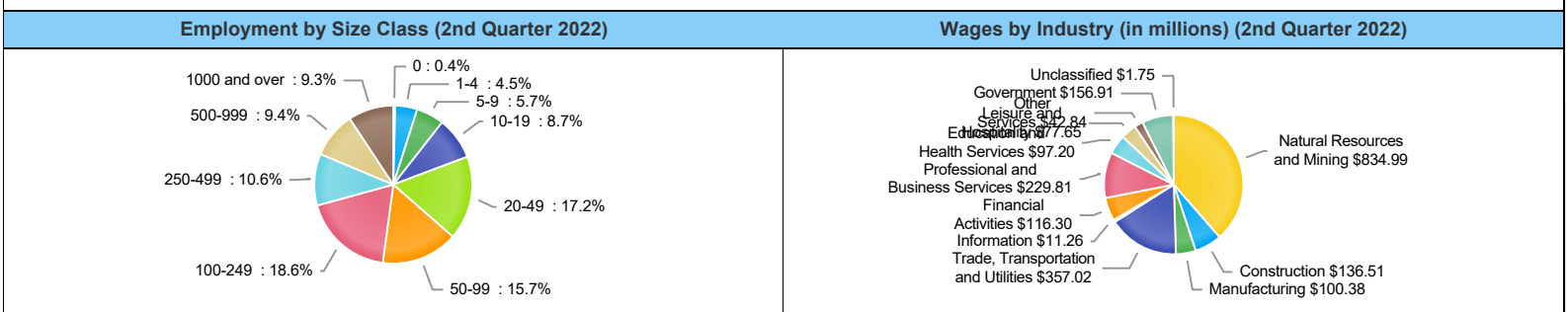
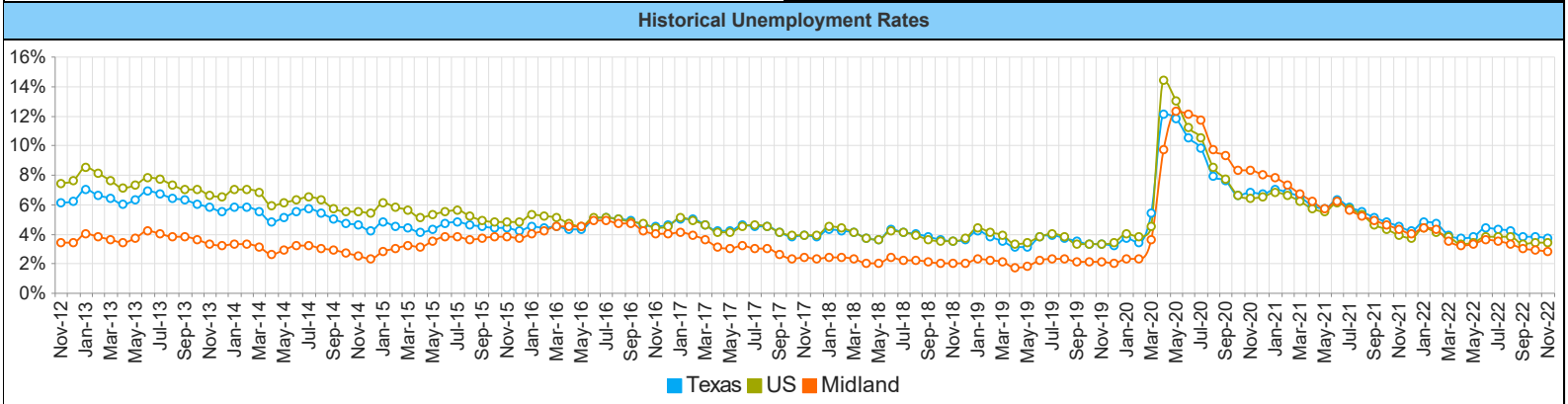
IMPROVE QUALITY OF LIFE
(PARKS, SCHOOLS,
COMMUNITY ESTHETICS, ETC.)

EXPOSE MIDLAND TO
OTHER COMPANIES
LOOKING TO EXPAND
THROUGH
TRADESHOWS AND
SITE SELECTOR EVENTS

MEET WITH MORE AND
MORE BUSINESSES TO
ENLIGHTEN THEM ABOUT
LOCAL RESOURCES



Midland MSA		November 2022			
	MSA Labor Force Statistics				
		Nov-22	Oct-22	Nov-21	Yearly Change
	Civilian Labor Force	104,705	104,002	103,660	1,045
	Employed	101,760	100,937	99,216	2,544
	Unemployed	2,945	3,065	4,444	-1,499
	Unemployment Rate	2.8%	2.9%	4.3%	-1.5%
	Texas Labor Force Statistics				
		Nov-22	Oct-22	Nov-21	Yearly Change
	Civilian Labor Force	14,704,535	14,630,713	14,393,136	311,399
	Employed	14,160,347	14,081,149	13,742,125	418,222
	Unemployed	544,188	549,564	651,011	-106,823
	Unemployment Rate	3.7%	3.8%	4.5%	-0.8%
US Labor Force Statistics					
	Nov-22	Oct-22	Nov-21	Yearly Change	
Civilian Labor Force	164,272,000	164,753,000	162,099,000	2,173,000	
Employed	158,749,000	159,144,000	155,797,000	2,952,000	
Unemployed	5,523,000	5,609,000	6,302,000	-779,000	
Unemployment Rate	3.4%	3.4%	3.9%	-0.5%	



Employment by Industry (November 2022)

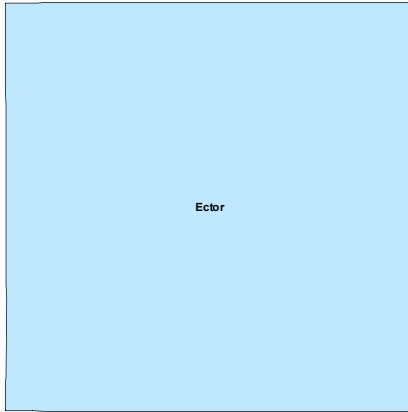
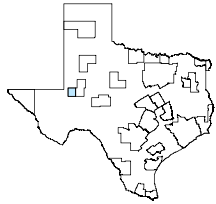
Industry	Current Month Employment	% Monthly Change	% Yearly Change
Total Nonfarm	109,500	0.8%	4.1%
Mining, Logging and Construction	34,300	1.2%	8.2%
Manufacturing	4,200	0.0%	5.0%
Trade, Transportation, and Utilities	21,800	1.4%	0.9%
Information	700	0.0%	0.0%
Financial Activities	5,100	0.0%	2.0%
Professional and Business Services	10,200	1.0%	2.0%
Education and Health Services	7,200	0.0%	2.9%
Leisure and Hospitality	12,000	0.0%	5.3%
Other Services	4,000	0.0%	5.3%
Government	10,000	1.0%	0.0%

Employment by Industry (November 2022)

Industry	Percentage
Mining, Logging and Construction	31.3%
Leisure and Hospitality	11.0%
Government	9.1%
Professional and Business Services	9.3%
Trade, Transportation, and Utilities	19.9%
Manufacturing	3.8%
Information	0.6%
Financial Activities	4.7%
Education and Health Services	6.6%
Other Services	3.7%

Odessa MSA

November 2022

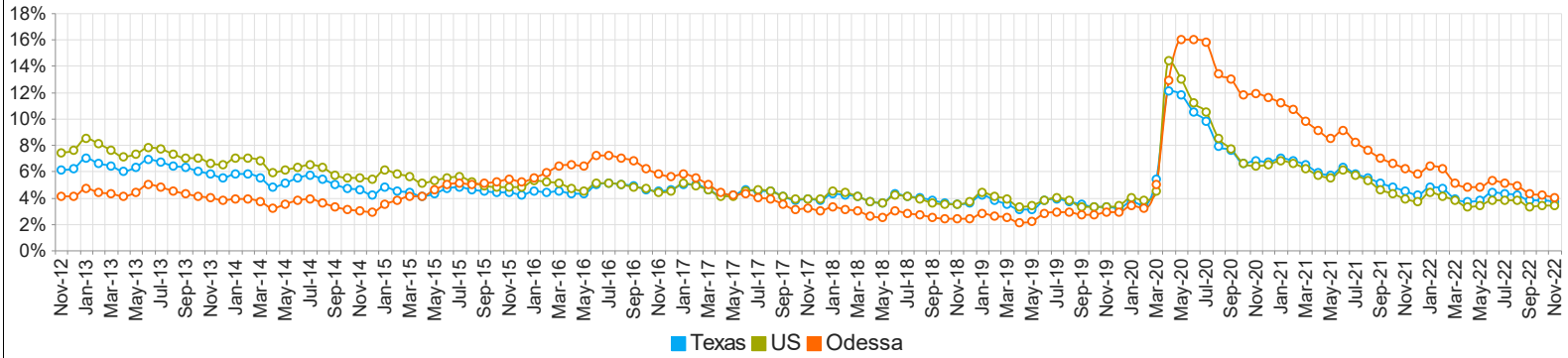


MSA Labor Force Statistics				
	Nov-22	Oct-22	Nov-21	Yearly Change
Civilian Labor Force	81,442	81,068	80,983	459
Employed	78,161	77,681	75,960	2,201
Unemployed	3,281	3,387	5,023	-1,742
Unemployment Rate	4.0%	4.2%	6.2%	-2.2%

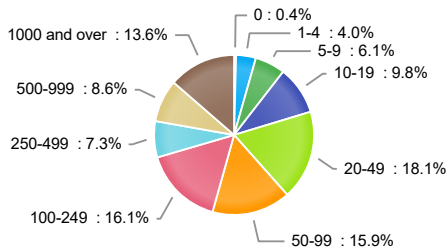
Texas Labor Force Statistics				
	Nov-22	Oct-22	Nov-21	Yearly Change
Civilian Labor Force	14,704,535	14,630,713	14,393,136	311,399
Employed	14,160,347	14,081,149	13,742,125	418,222
Unemployed	544,188	549,564	651,011	-106,823
Unemployment Rate	3.7%	3.8%	4.5%	-0.8%

US Labor Force Statistics				
	Nov-22	Oct-22	Nov-21	Yearly Change
Civilian Labor Force	164,272,000	164,753,000	162,099,000	2,173,000
Employed	158,749,000	159,144,000	155,797,000	2,952,000
Unemployed	5,523,000	5,609,000	6,302,000	-779,000
Unemployment Rate	3.4%	3.4%	3.9%	-0.5%

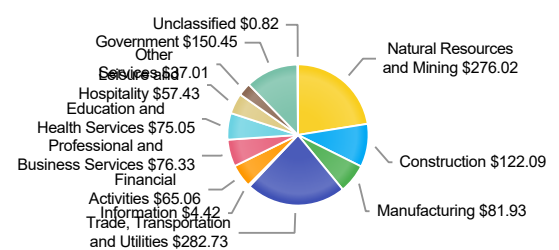
Historical Unemployment Rates



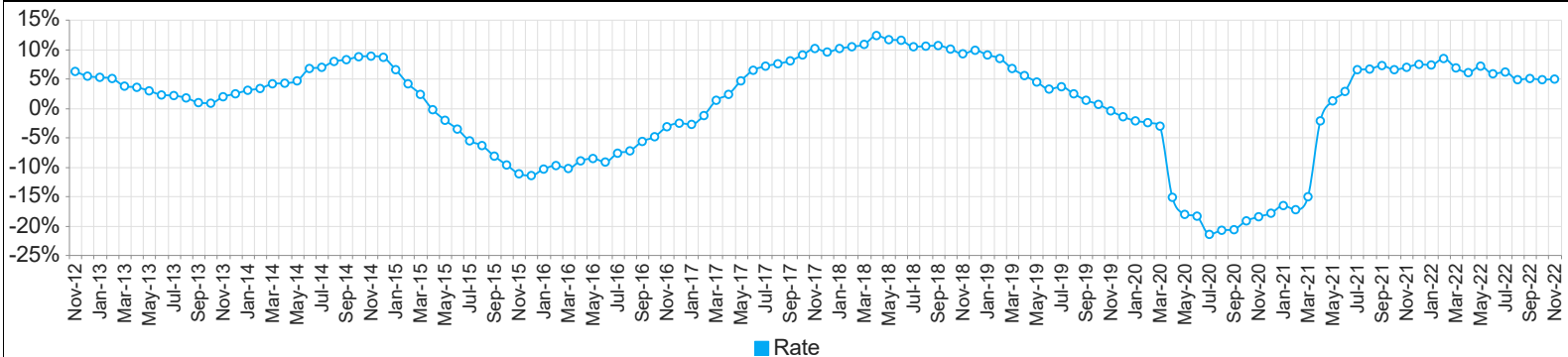
Employment by Size Class (2nd Quarter 2022)



Wages by Industry (in millions) (2nd Quarter 2022)



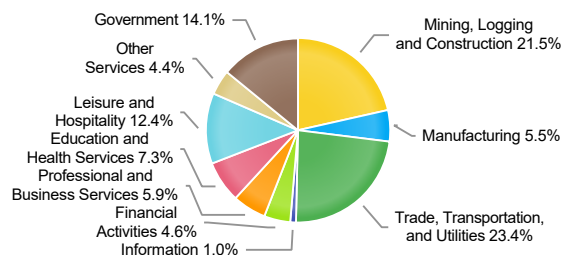
Annual Growth Rate Total Non-agricultural employment



Employment by Industry (November 2022)

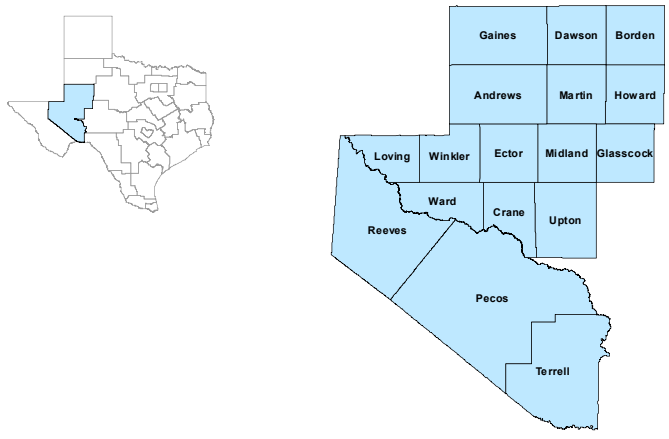
Industry	Current Month Employment	% Monthly Change	% Yearly Change
Total Nonfarm	76,800	1.2%	4.9%
Mining, Logging and Construction	16,500	0.6%	12.2%
Manufacturing	4,200	2.4%	5.0%
Trade, Transportation, and Utilities	18,000	2.3%	2.3%
Information	800	0.0%	0.0%
Financial Activities	3,500	0.0%	6.1%
Professional and Business Services	4,500	2.3%	4.7%
Education and Health Services	5,600	1.8%	5.7%
Leisure and Hospitality	9,500	0.0%	5.6%
Other Services	3,400	0.0%	3.0%
Government	10,800	0.9%	-0.9%

Employment by Industry (November 2022)



Permian Basin Workforce Development Area

November 2022



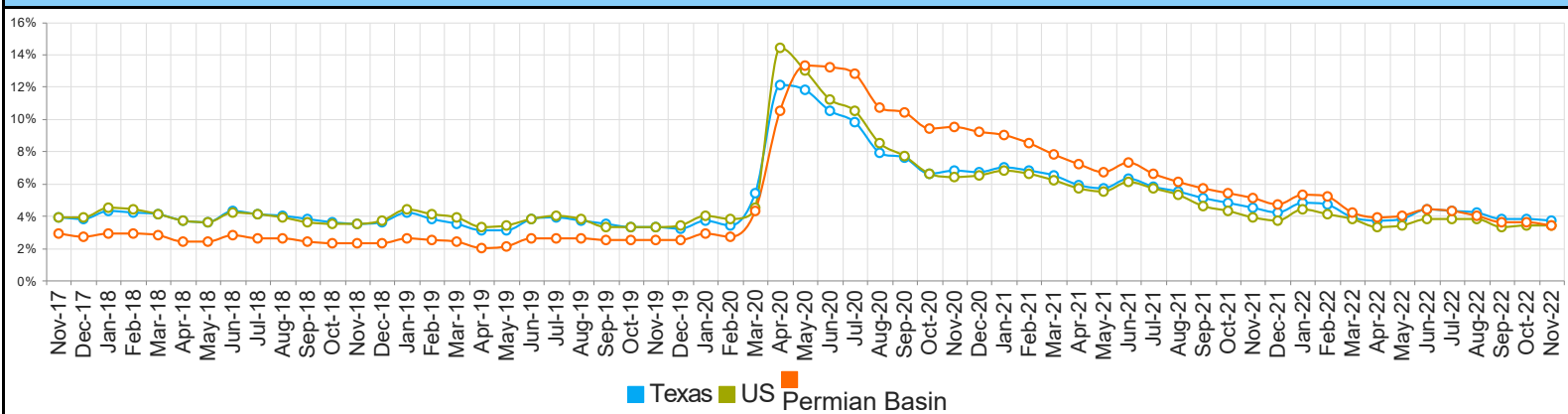
WDA Labor Force Statistics				
	Nov-22	Oct-22	Nov-21	Yearly Change
Civilian Labor Force	252,237	251,173	250,611	1,626
Employed	243,574	242,232	237,899	5,675
Unemployed	8,663	8,941	12,712	-4,049
Unemployment Rate	3.4%	3.6%	5.1%	-1.7%

Texas Labor Force Statistics				
	Nov-22	Oct-22	Nov-21	Yearly Change
Civilian Labor Force	14,704,535	14,630,713	14,393,136	311,399
Employed	14,160,347	14,081,149	13,742,125	418,222
Unemployed	544,188	549,564	651,011	-106,823
Unemployment Rate	3.7%	3.8%	4.5%	-0.8%

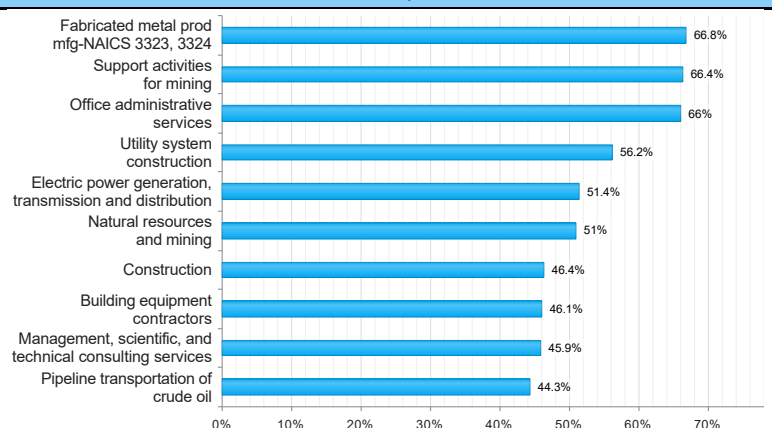
US Labor Force Statistics				
	Nov-22	Oct-22	Nov-21	Yearly Change
Civilian Labor Force	164,272,000	164,753,000	162,099,000	2,173,000
Employed	158,749,000	159,144,000	155,797,000	2,952,000
Unemployed	5,523,000	5,609,000	6,302,000	-779,000
Unemployment Rate	3.4%	3.4%	3.9%	-0.5%

Continued Claims for the Week of the 12th				
	Nov-22	Oct-22	Nov-21	Yearly Change
WDA	791	782	1,235	-444
Texas	79,562	75,316	85,323	-5,761

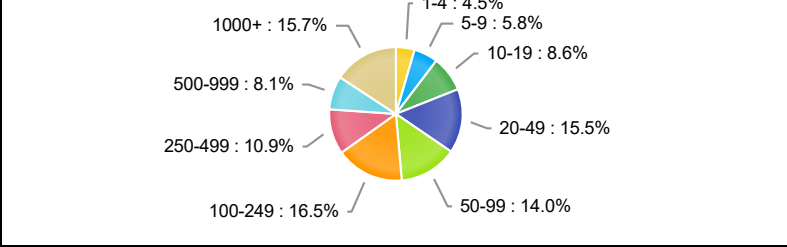
Historical Unemployment Rates



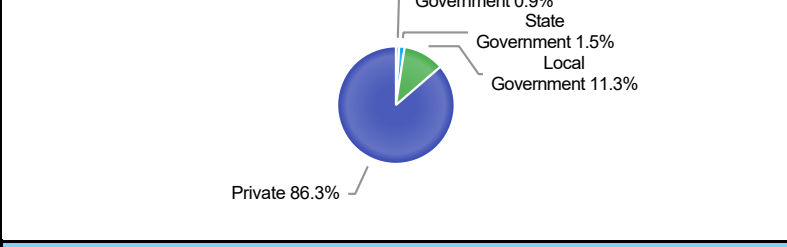
Projected Top Ten Fastest Growing Industries in WDA (% Growth 2020-2030)



Employment by Size Class (2nd Quarter 2022)



Employment by Ownership (2nd Quarter 2022)



Average Weekly Wage (2nd Quarter 2022)

	Q2 2022	Q1 2022	Q2 2021	Quarterly Change	Yearly Change
WDA	\$1,390	\$1,459	\$1,248	-\$69	\$142
Texas	\$1,284	\$1,368	\$1,210	-\$84	\$74
US	\$1,294	\$1,374	\$1,241	-\$80	\$53

Employment by Industry (2nd Quarter 2022, Percent Change)

Industry	Employment	% of Total	% Quarterly Change	% Yearly Change
Natural Resources and Mining	49,549	20.4%	4.3%	16.3%
Construction	19,467	8.0%	5.5%	21.2%
Manufacturing	13,929	5.7%	2.8%	52.8%
Trade, Transportation and Utilities	50,590	20.9%	0.7%	4.7%
Information	1,906	0.8%	4.4%	6.2%
Financial Activities	10,534	4.3%	1.6%	6.7%
Professional and Business Services	17,660	7.3%	0.8%	7.4%
Education and Health Services	39,025	16.1%	-1.1%	1.8%
Leisure and Hospitality	25,625	10.6%	4.5%	4.7%
Other Services	7,021	2.9%	4.3%	8.8%
Public Administration	7,101	2.9%	-1.0%	-2.7%

Employment by Industry (2nd Quarter 2022)

