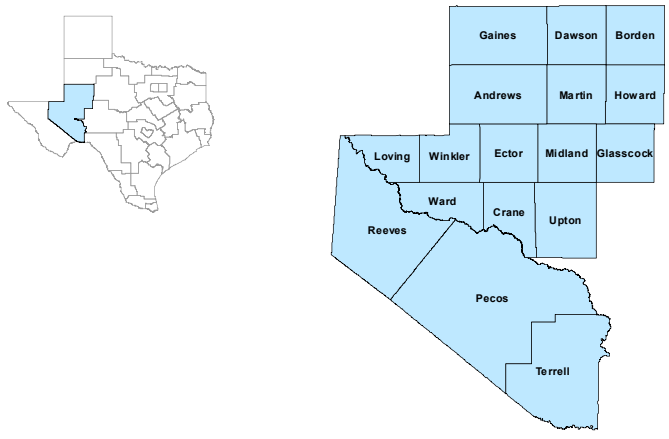


Permian Basin Workforce Development Area

August 2020



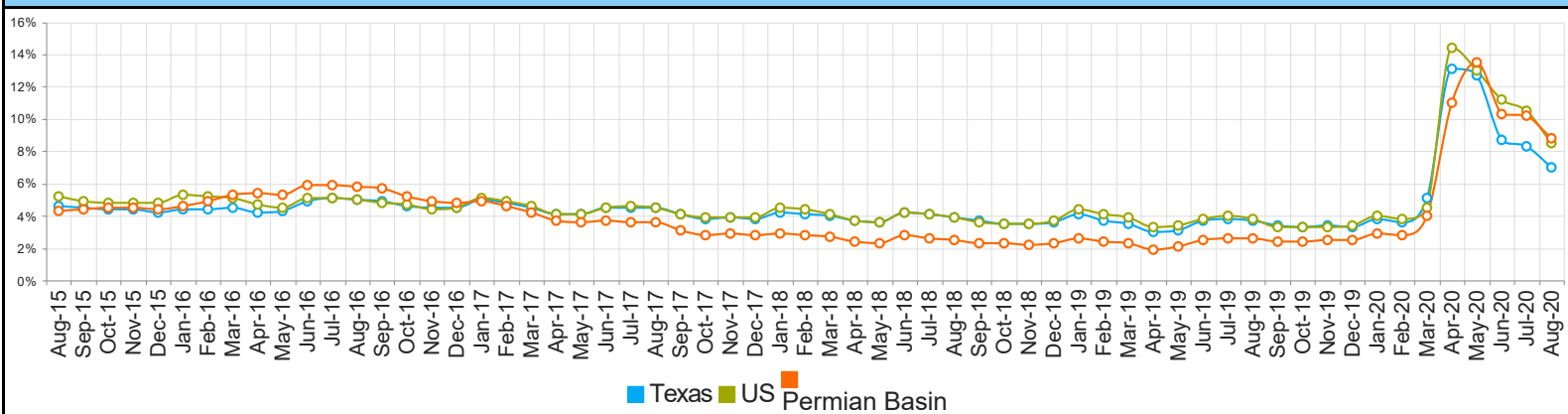
WDA Labor Force Statistics				
	Aug-20	Jul-20	Aug-19	Yearly Change
Civilian Labor Force	269,892	261,620	271,847	-1,955
Employed	246,178	234,999	264,748	-18,570
Unemployed	23,714	26,621	7,099	16,615
Unemployment Rate	8.8%	10.2%	2.6%	6.2%

Texas Labor Force Statistics				
	Aug-20	Jul-20	Aug-19	Yearly Change
Civilian Labor Force	14,325,524	13,858,302	14,030,092	295,432
Employed	13,329,260	12,706,679	13,506,644	-177,384
Unemployed	996,264	1,151,623	523,448	472,816
Unemployment Rate	7.0%	8.3%	3.7%	3.3%

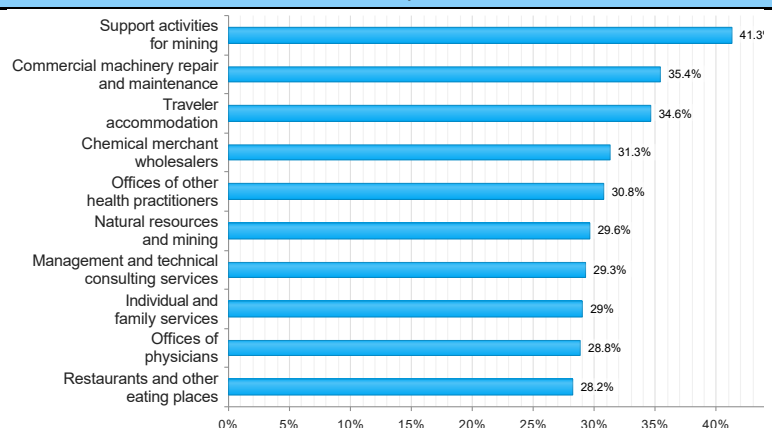
US Labor Force Statistics				
	Aug-20	Jul-20	Aug-19	Yearly Change
Civilian Labor Force	160,966,000	161,374,000	164,019,000	-3,053,000
Employed	147,224,000	144,492,000	157,816,000	-10,592,000
Unemployed	13,742,000	16,882,000	6,203,000	7,539,000
Unemployment Rate	8.5%	10.5%	3.8%	4.7%

Continued Claims for the Week of the 12th				
	Aug-20	Jul-20	Aug-19	Yearly Change
WDA	21,793	24,732	1,176	20,617
Texas	769,869	938,497	95,110	674,759

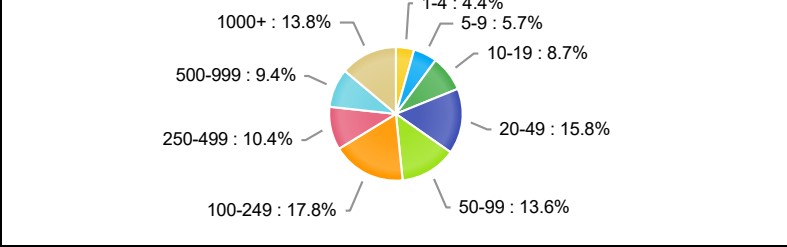
Historical Unemployment Rates



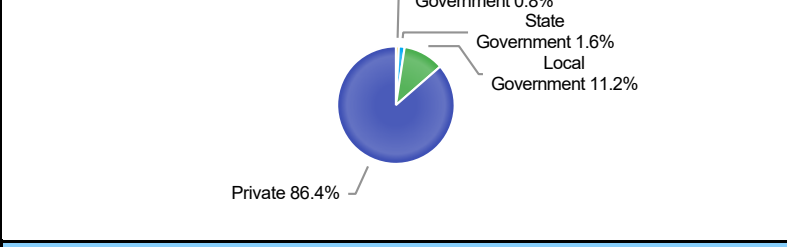
Projected Top Ten Fastest Growing Industries in WDA (% Growth 2016-2026)



Employment by Size Class (1st Quarter 2020)



Employment by Ownership (1st Quarter 2020)



Average Weekly Wage (1st Quarter 2020)

	Q1 2020	Q4 2019	Q1 2019	Quarterly Change	Yearly Change
WDA	\$1,390	\$1,363	\$1,372	\$27	\$18
Texas	\$1,232	\$1,187	\$1,204	\$45	\$28
US	\$1,222	\$1,185	\$1,183	\$37	\$39

Employment by Industry (1st Quarter 2020, Percent Change)

Industry	Employment	% of Total	% Quarterly Change	% Yearly Change
Natural Resources and Mining	55,583	22.3%	-1.2%	-5.5%
Construction	20,855	8.4%	-0.9%	-7.6%
Manufacturing	10,878	4.4%	-2.4%	-7.5%
Trade, Transportation and Utilities	52,965	21.3%	-3.4%	-0.6%
Information	2,213	0.9%	-4.6%	-2.0%
Financial Activities	10,617	4.3%	4.9%	5.8%
Professional and Business Services	17,611	7.1%	0.1%	3.5%
Education and Health Services	38,712	15.6%	-0.7%	2.2%
Leisure and Hospitality	24,753	10.0%	-2.0%	2.2%
Other Services	7,084	2.8%	-2.1%	-1.4%
Public Administration	7,431	3.0%	0.4%	5.6%

Employment by Industry (1st Quarter 2020)

