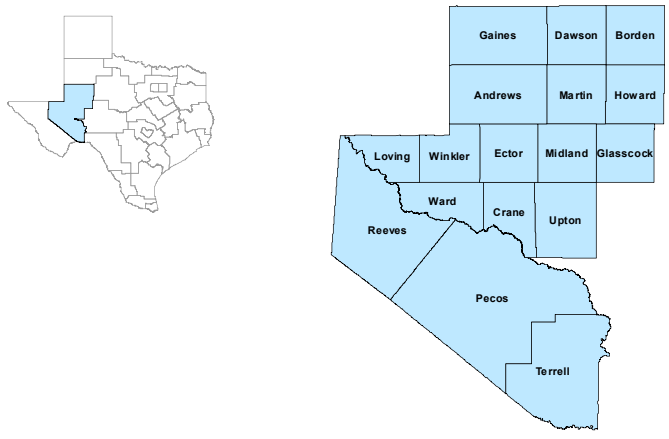


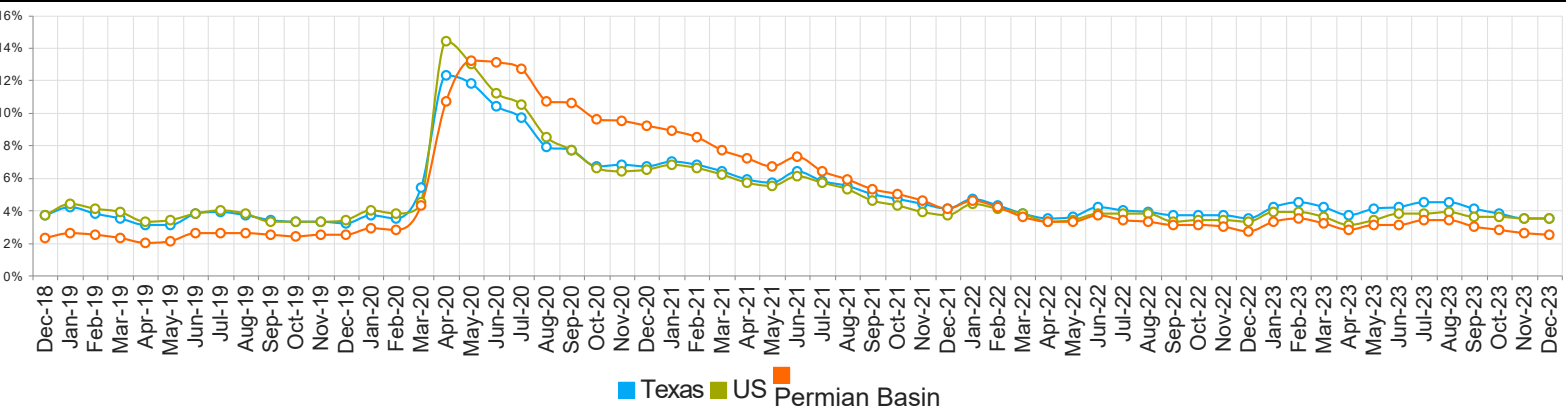
Permian Basin Workforce Development Area



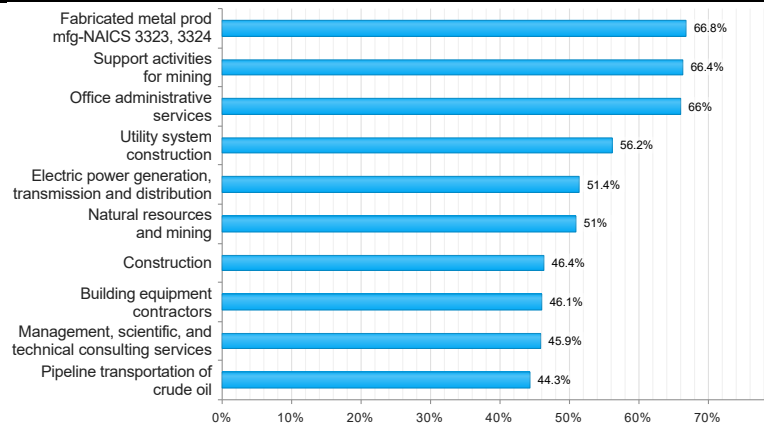
December 2023

WDA Labor Force Statistics				
	Dec-23	Nov-23	Dec-22	Yearly Change
Civilian Labor Force	272,517	275,176	265,822	6,695
Employed	265,690	268,121	258,561	7,129
Unemployed	6,827	7,055	7,261	-434
Unemployment Rate	2.5%	2.6%	2.7%	-0.2%
Texas Labor Force Statistics				
	Dec-23	Nov-23	Dec-22	Yearly Change
Civilian Labor Force	15,147,835	15,276,313	14,773,939	373,896
Employed	14,619,352	14,741,641	14,260,768	358,584
Unemployed	528,483	534,672	513,171	15,312
Unemployment Rate	3.5%	3.5%	3.5%	0.0%
US Labor Force Statistics				
	Dec-23	Nov-23	Dec-22	Yearly Change
Civilian Labor Force	166,661,000	167,977,000	164,224,000	2,437,000
Employed	160,754,000	162,149,000	158,872,000	1,882,000
Unemployed	5,907,000	5,827,000	5,352,000	555,000
Unemployment Rate	3.5%	3.5%	3.3%	0.2%
Continued Claims for the Week of the 12th				
	Dec-23	Nov-23	Dec-22	Yearly Change
WDA	1,054	1,031	801	253
Texas	112,831	109,441	89,234	23,597

Historical Unemployment Rates



Projected Top Ten Fastest Growing Industries in WDA (% Growth 2020-2030)



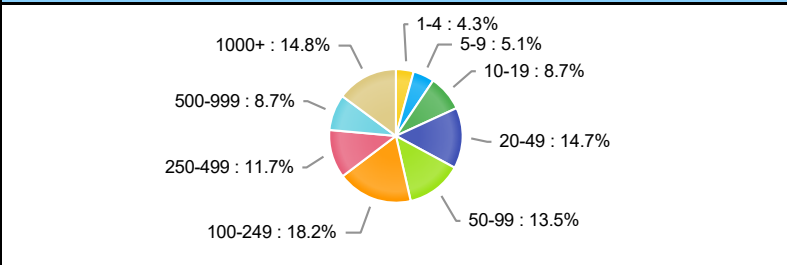
Average Weekly Wage (2nd Quarter 2023)

	Q2 2023	Q1 2023	Q2 2022	Quarterly Change	Yearly Change
WDA	\$1,474	\$1,655	\$1,378	\$-181	\$96
Texas	\$1,322	\$1,480	\$1,281	\$-158	\$41
US	\$1,332	\$1,465	\$1,291	\$-133	\$41

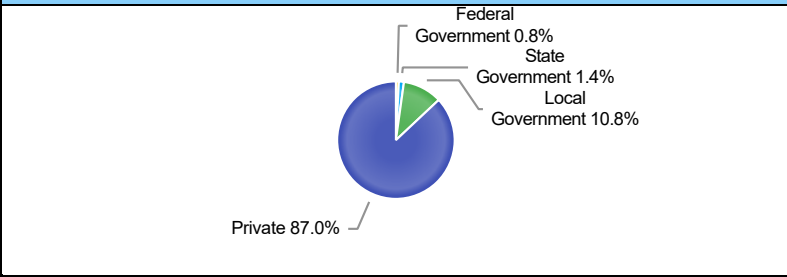
Employment by Industry (2nd Quarter 2023, Percent Change)

Industry	Employment	% of Total	% Quarterly Change	% Yearly Change
Natural Resources and Mining	57,181	22.3%	2.4%	14.9%
Construction	22,001	8.6%	1.6%	12.3%
Manufacturing	10,419	4.1%	2.4%	2.9%
Trade, Transportation and Utilities	53,642	20.9%	1.3%	5.8%
Information	1,978	0.8%	6.3%	3.4%
Financial Activities	11,029	4.3%	1.1%	3.9%
Professional and Business Services	19,017	7.4%	1.0%	6.8%
Education and Health Services	40,004	15.6%	0.3%	2.1%
Leisure and Hospitality	26,305	10.3%	2.4%	2.4%
Other Services	7,703	3.0%	1.7%	9.7%
Public Administration	6,919	2.7%	1.6%	-2.5%

Employment by Size Class (2nd Quarter 2023)



Employment by Ownership (2nd Quarter 2023)



Employment by Industry (2nd Quarter 2023)

